



## Comprehensive Air Control and Architectural Metal Products

Our companies manufacture and supply high-quality HVAC products across North America, supported by five centers of excellence nationwide. Backed by over 200 years of combined experience, we deliver innovative engineering, efficient shipping, and fast turnaround times—prioritizing quality, speed, and customization, all guided by shared Core Values.

### CORE VALUES

#### Customer First Mindset

We provide our customers with more than just the products we manufacture. Exceptional service is what sets us apart, and our goal each day is to provide a positive customer experience — putting our customers first in every thought and every decision.

#### Ownership

We take pride in everything we do, from customer communications to product manufacturing. We understand that every action is a direct reflection of who we are.

#### Willingness to Learn

From the markets we serve to the people we work with, our business continually grows and changes. We embrace new and unfamiliar opportunities so we can best serve our customers and achieve our long-term goals.

#### Humility

We must stay humble while still taking pride in ourselves, our colleagues, and our company.

#### Problem-solving Attitude

We understand that customers are gained, lessons are learned, and relationships are forged when issues arise. As a team, we are solutions oriented — facing each challenge with a positive attitude and optimism.



**S&P Air Control products are proudly made in the U.S.A.**

**PRODUCT SHOWCASE**

**EAS Wall Shutters**

Rear flanged vertical mount automatic exhaust shutter, aluminum frame / aluminum blades



**AMD Motorized Dampers**

Heavy-duty damper with 1 1/2" flanged frame, comes standard with a factory installed motor



**ACL Aluminum Louvers**

Extruded aluminum combination louver/damper, 4" deep channel frame, drainable blades



**PRODUCT SHOWCASE**

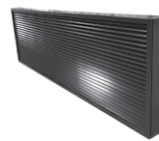
**WDV-130**

AMCA 540/550 certified, 5" deep vertical blade high-performance louver



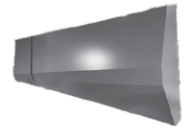
**PTG-42 MD**

Certified hurricane impact PTAC louver with oversized options



**Brake Metal**

Custom fabrication including sills, perf, flashings, shadowboxes, endcaps, fascia panels, and more



**PRODUCT SHOWCASE**

**Acoustical Panels**

Modular acoustical panels for self-supporting HVAC plenums or equipment enclosures, barrier walls, and absorption systems



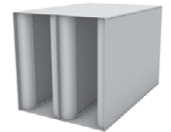
**Acoustical Louvers**

Available in a variety of geometries, construction materials, sizes and finishes to meet air flow, acoustical, and architectural requirements



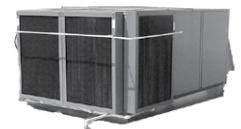
**Sound Attenuators**

Utilize geometric baffle configurations of varying sizes to offer a range of acoustic performance options



**PRODUCT SHOWCASE**

Energy Saver designs and manufactures reliable, energy-efficient, low-maintenance precooling systems with advanced microprocessor controls. Each CellCool unit is custom engineered to match the air-handling unit's CFM for optimal evaporative cooling performance.



**PRODUCT SHOWCASE**

**Jet Fans**

Efficient air movement for parking garages and tunnels with minimal noise and energy use



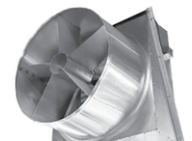
**PCD**

Features a high-performance EC motor for optimal air quality with lower energy use



**Crew Cooler**

A high-capacity aisle fan that moves large volumes of air at low speeds and noise levels



**PRODUCT SHOWCASE**

**D-HFA-6**

High Performance Aluminum Fixed Blade Louver



**CD-100**

Opposed Blade Extruded Aluminum Control Damper



**F/S-3V-1**

UL555(S) 1 1/2 Hr. Class I Combination Fire/Smoke Damper

